

TABLE OF CONTENTS

Detox 2

CONFIDENTIAL

DETOX

TOXICLEAR

WHAT IT IS:

An advanced nutritional supplement containing three powerful natural toxin binders: Chlorella, Zeolite and Activated Charcoal.

WHY YOU NEED IT:

Important for patients needing a comprehensive detox solution
Targets patients wanting to enhance digestive health
Supports patients looking to boost energy and mental clarity
Great for patients benefiting from boosting immune health
Good for people looking to reduce toxic burdens and choose a healthier lifestyle

HOW IT HELPS:

It is an undisputed fact that we live in an increasingly toxic environment. From microplastics, mold biotoxin, heavy metal exposures, to forever chemicals, human health is under daily assault that exceeds our natural detoxication capacities. While the human body has some inherent detox functionality, our collective DNA was born at a time before modern chemistry flooded Planet Earth with an overwhelming array and...

[Read More](#)

Price:





GLUTATHIONE

WHAT IT IS:

A master antioxidant for global detoxification, immune support, and health promotion

WHY YOU NEED IT:

Important for patients needing enhanced detoxification support
Great for patients looking for effective immune boosting supplementation
Targets patients fighting chronic infections
Good for patients with reduced or compromised immune functioning
Provides potent antioxidant support
Augments natural therapies that promote healthy blood pressure and erections
Clinically proven to boost natural glutathione levels

HOW IT HELPS:

We all live in a toxic soup of city living, made worse by many of our 'unfortunate' dietary choices, poor sleep, and relentless stress. Of course, we are born with some basic detoxification capacities that serve to protect us from many toxic and stressful exposures. But we certainly were not designed to adroitly handle the millions of toxic chemicals...

[Read More](#)

Price:



MUDSLIDE

Mudslide
Moving Past Constipation

WHAT IT IS:

- A natural blend of mineral, fruit, and herbal extracts for GI health

WHY YOU NEED IT:

- Important for patients with constipation
- Targets patients who need support for digestion and elimination
- Supports patients who need enhanced GI motility and stool bulk
- Great for patients needing detoxification assistance
- All-natural, drug-free relief

HOW IT HELPS:

Good health begins in the gut, and GI regularity is vital to maintaining wellbeing. Regular colon eliminations should occur two to three times daily, not a few times weekly. If something comes in the front door, then something needs to leave through the back door. Otherwise, your body is just storing toxic waste. Eventually, some of those toxins will get into your blood stream and will poison your good health.

Mudslide combines three classic, time-tested ingredients...

[Read More](#)

Price:



NUTRA-KLENS 2.0 CHOCOLATE

Nutra-Klens
A New Beginning
Pushing Your Buttons

Have you ever wished that your body had a “reset” button like the one on your computer? With a push of a button, you would get a fresh start, a “re-boot” that would allow you to clear out your system and get back to feeling better.

Unfortunately, there is no “reset” button hidden on the human body. Our forefathers recognized the value of “fresh starts” and made regular spiritual and physical cleansing part of every major religion.

When you are feeling unwell, it is hard to assess what is making you feel poorly when there are so many possibilities. However, there are strategies you can use to clear your mind and your body of the stress and “toxins” that are making you sick. With the Nutra-Klens program, you get a fresh start, and from this new beginning, you will be able to better sense which parts of your life and...

[Read More](#)

Price:



NUTRA-KLENS 2.0 VANILLA

Nutra-Klens
A New Beginning
Pushing Your Buttons

Have you ever wished that your body had a “reset” button like the one on your computer? With a push of a button, you would get a fresh start, a “re-boot” that would allow you to clear out your system and get back to feeling better.

Unfortunately, there is no “reset” button hidden on the human body. Our forefathers recognized the value of “fresh starts” and made regular spiritual and physical cleansing part of every major religion.

When you are feeling unwell, it is hard to assess what is making you feel poorly when there are so many possibilities. However, there are strategies you can use to clear your mind and your body of the stress and “toxins” that are making you sick. With the Nutra-Klens program, you get a fresh start, and from this new beginning, you will be able to better sense which parts of your life and...

[Read More](#)

Price:



NUTRA-KLENS 2.0 CHAI

Nutra-Klens
A New Beginning
Pushing Your Buttons

Have you ever wished that your body had a “reset” button like the one on your computer? With a push of a button, you would get a fresh start, a “re-boot” that would allow you to clear out your system and get back to feeling better.

Unfortunately, there is no “reset” button hidden on the human body. Our forefathers recognized the value of “fresh starts” and made regular spiritual and physical cleansing part of every major religion.

When you are feeling unwell, it is hard to assess what is making you feel poorly when there are so many possibilities. However, there are strategies you can use to clear your mind and your body of the stress and “toxins” that are making you sick. With the Nutra-Klens program, you get a fresh start, and from this new beginning, you will be able to better sense which parts of your life and...

[Read More](#)

Price:



ORMED OILS BLEND

Ormed Chronic Infections Protocol

An Activated, Liposomal Botanical and Nutritional Protocol for Tick-Borne and Chronic Infections

Week One:

Liposomal Vitamin C. Begin at a dose of 2-3 drops, three times a day. The maximum recommended dose is 30 drops, three times per day. After one week of the lower dose, it can be gradually increased.

Week Two:

Continue with Vitamin C, and add the specially processed Grapefruit Seed Extract. Begin GSE at a dose of 10 drops three times per day. NOTE: Sensitive patients should start SLOW at 1 drop, three times per day. If no die-off reactions occur, dosage can be gradually increased to 25-30 drops, three times per day.

Week Three:

Continue with the Vitamin C and Grapefruit Seed Extract. Add the specially processed Ormed Essential Oils Blend at 1 or 2 drops, three times per day. The maximum recommended dose is 5 drops, three times per day.

The...

[Read More](#)

Price:



LYME & CO-INFECTION NOSODE

Lyme Nosode

WHAT IT IS:

- A homeopathic supplement to support patients with Lyme disease

WHY YOU NEED IT:

- Wakes the immune system to support patients fighting Lyme disease and related infections
- All natural, no side effects

HOW IT WORKS:

Many patients with Lyme disease suffer with the infection for years. Part of the reason infections can become chronic is that the bugs have a neat trick: they partially disable the immune system. In doing so, the Lyme spirochetes can confuse and disarm your immune system, allowing the infection to linger.

The Lyme bugs do not want to kill you, just to feed off your energy grid. Taking the Lyme Nosode has the effect of waking up the immune system, turning the tide of the disease in the patients' favor. This potent homeopathic was created by literally dragging a blanket along the forest floor to collect hundreds of different ticks. These...

[Read More](#)

Price:



LIPOSOMAL VITAMIN C

Ormed Chronic Infections Protocol

An Activated, Liposomal Botanical and Nutritional Protocol for Tick-Borne and Chronic Infections

Week One:

Liposomal Vitamin C. Begin at a dose of 2-3 drops, three times a day. The maximum recommended dose is 30 drops, three times per day. After one week of the lower dose, it can be gradually increased.

Week Two:

Continue with Vitamin C, and add the specially processed Grapefruit Seed Extract. Begin GSE at a dose of 10 drops three times per day. NOTE: Sensitive patients should start SLOW at 1 drop, three times per day. If no die-off reactions occur, dosage can be gradually increased to 25-30 drops, three times per day.

Week Three:

Continue with the Vitamin C and Grapefruit Seed Extract. Add the specially processed Ormed Essential Oils Blend at 1 or 2 drops, three times per day. The maximum recommended dose is 5 drops, three times per day.

The...

[Read More](#)

Price:



COCKTAIL

The Cocktail

A 'Mixed' Drink for the new Millennium

WHAT IT IS:

- A powerful, liposomal blend of natural, plant-based antibiotics

WHY YOU NEED IT:

- Targets patients with Chronic Inflammatory Response Syndrome
- Important for patients diagnosed with chronic infections, Lyme disease, 'co-infections', parasites, and chronic viral syndromes
- Supports patients with Chronic Fatigue, Fibromyalgia
- Organic, non-GMO ingredients

HOW IT HELPS:

We have entered the era of the 'SuperBug,' the highly resilient, nearly unstoppable bacteria that laugh at modern antibiotic drugs and evade our immune systems. If you are reading this handout, then you or someone you love has been diagnosed with an infection by one of these mighty microbes. Fortunately, Mother Nature has provided some natural remedies that can help patients recover from SuperBug infections.

The Cocktail is the...

[Read More](#)

Price:



BRAZILIAN GREEN PROPOLIS

[Read More](#)

Price:

CONFIDENTIAL



BIOCITRICIDE

Ormed Chronic Infections Protocol

An Activated, Liposomal Botanical and Nutritional Protocol for Tick-Borne and Chronic Infections

Week One:

Liposomal Vitamin C. Begin at a dose of 2-3 drops, three times a day. The maximum recommended dose is 30 drops, three times per day. After one week of the lower dose, it can be gradually increased.

Week Two:

Continue with Vitamin C, and add the specially processed Grapefruit Seed Extract. Begin GSE at a dose of 10 drops three times per day. NOTE: Sensitive patients should start SLOW at 1 drop, three times per day. If no die-off reactions occur, dosage can be gradually increased to 25-30 drops, three times per day.

Week Three:

Continue with the Vitamin C and Grapefruit Seed Extract. Add the specially processed Ormed Essential Oils Blend at 1 or 2 drops, three times per day. The maximum recommended dose is 5 drops, three times per day.

The...

[Read More](#)

Price:



ARTEMIS

Artemis

2015 Nobel Prize in Medicine

WHAT IT IS:

- Artemisinin from Sweet Wormwood extract

WHY YOU NEED IT:

- Supports patients needing therapy for chronic infections such as Lyme disease, Lyme-related co-infections (Bartonella, Babesia, Anaplasma, Rickettsia, Mycoplasma, Chlamydia), chronic viral infections (Epstein Barr, CMV, Herpes), and parasites
- Important adjuvant therapy for patients with cancer
- Targets patients who need powerful immune support
- Great for colon health and hemorrhoid management
- Clinically tested
- Well tolerated, natural therapy

HOW IT WORKS:

Artemisinin is an extract from the Chinese herb, Sweet Wormwood, that has been used for over two thousand years in traditional herbal therapy. In the 1960s, a Chinese medical doctor, Dr. Tu, discovered the effectiveness of artemisinin in treating malaria. Artemisinin derivatives are now used around the world to treat malaria, and Dr. Tu received the 2015 Nobel Prize in Medicine for...

[Read More](#)

Price:



ZEOBIND

ZeoBind Safely Removing Unwanted Toxins
WHAT IT IS: • A charged mineral that binds to toxins for healthy detoxification
WHY YOU NEED IT: • Supports the removal of heavy metals, pesticides, radioactive metals, and chemicals • Great for patients with mold toxicity, mycotoxins • Necessary for patients with glyphosate (RoundUp) toxicity, exposure • Important for patients with food poisoning, diarrhea, ulcers and heartburn • Targets patients who need to reduce fluoride toxicity • Lowest in Aluminum • All natural, well tolerated
HOW IT HELPS: ZeoBind contains a specific type of zeolite, a special type of fine, clay powder that forms as molten lava hits cold seawater. When this primordial phenomenon occurs, a three-dimensional, honeycomb micro-tube is created which maintains a powerful negative ionic charge. The negative charge of the zeolite structure traps positively charged metals, toxins and...

[Read More](#)

Price:



CILANTRO

Cilantro Extract

WHAT IT IS:

- Organic cilantro tinctured extract to support heavy metal detoxification

WHY YOU NEED IT:

- The only plant-based supplement to support patients needing toxin removal from the brain and nerves
- Important for patients wanting to detox lead, mercury, and aluminum
- Targets patients looking to boost the effectiveness of antibiotics and antiviral therapies
- Good for patients looking to maintain intestinal health free of parasites and Salmonella bacteria

HOW IT HELPS:

Also known as “Chinese parsley,” cilantro has been clinically studied for its toxin binding and removal properties. Unlike other prescription and natural detoxifiers, cilantro can cross the blood-brain barrier and support toxin removal beyond the reach of other substances.

As arguably the most important and complex organ in our bodies, Nature has taken some extreme...

[Read More](#)

Price:



CHLORELLA

Chlorella pyrenoidosa

WHAT IT IS:

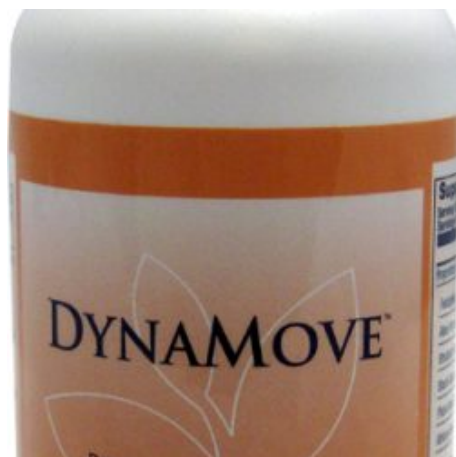
- Chlorella pyrenoidosa is a single-celled seaweed used in detoxification

WHY YOU NEED IT:

- Supports the body during intense detoxification and chelation therapy
- Important for patients with toxic mold exposure and biotoxin illness
- Provides highly nutritious protein, fats, vitamins and minerals
- Nature's oldest superfood, capable of independently sustaining human life as a food source
- Targets patients wanting immune boosting, anti-cancer support
- Good for patients looking for strong anti-virals
- Supports normal bowel bacterial flora
- Great source of fiber
- Increases cellular glutathione, the body's most important anti-oxidant and detoxifier
- Alkalinizes the body
- Targets patients with Insulin Resistance by activating PPAR (an enzyme important in fighting high blood sugar, prostate cancer, and breast...

[Read More](#)

Price:



DYNAMOVE

DYNAMOVE

WHAT IT IS:

- Potent herbal formula for patients looking for colon cleansing, parasite cleansing, and daily regularity

WHY YOU NEED IT:

- Promotes optimal colon health for patients with chronic constipation and parasites
- Supports a thorough colon cleansing
- Important for patients needing more aggressive colon regularity
- Time-tested formula

HOW IT HELPS:

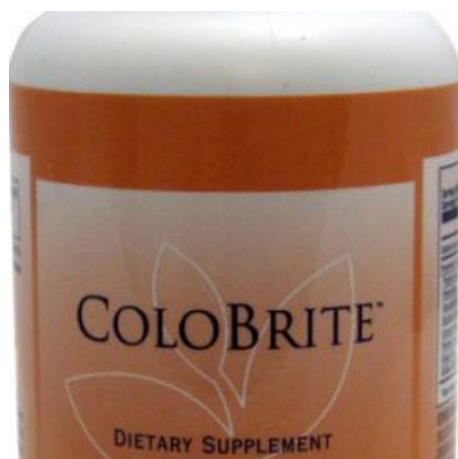
A healthy colon is essential for optimal wellness, and for most of us, our colons are far from healthy. Having only a couple of bowel movements a week is not acceptable and creates toxicity that is not compatible with reliably good health.

Many patients are surprised to learn that even one bowel movement daily is not enough. The foundation for a healthy, happy colon (and a healthy, happy you) begins with two to three bowel movements daily, but that is only the first step.

Like your urine flow, the...

[Read More](#)

Price:



COLOBRITE

COLOBRITE

WHAT IT IS:

- Gentle herbal formula to support healthy colon cleansing and regularity

WHY YOU NEED IT:

- Promotes optimal colon health
- Supports a thorough colon cleansing
- Important for patients needing colon regularity
- Supports patients looking for healthy weight loss and appetite control
- Safe, non-habit forming formula

HOW IT HELPS:

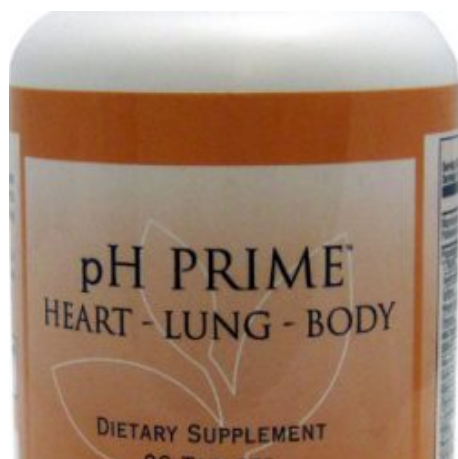
A healthy colon is essential for optimal wellness, and for most of us, our colons are far from healthy. Your colon health is not assured by having just one bowel movement daily. The foundation for a healthy, happy colon begins with two to three bowel movements daily, but that is only the first step.

Like your urine flow, the colon represents an important super-highway of toxin removal. With that kind of heavy traffic, regular attention is necessary to ensure nothing is left behind.

ColoBrite has been formulated for a dual...

[Read More](#)

Price:



PULM PLUS (HEART-LUNG-BODY)

pH Prime
Heart-Lung-Body

WHAT IT IS:

- Herbal cleanse formula for heart and lungs
- Supports optimal total body acid-base balance

WHY YOU NEED IT:

- Unique formula for patients wanting to detox heart and lung tissues
- Important for patients trying to alkalinize body pH

HOW IT HELPS:

After your brain, your heart and lungs are your second and third most important organs, respectively. Like all of your other organs and tissues, your heart and lungs need to be regularly cleansed, too. Most people are familiar with kidney, liver and colon cleansing but are not sure how to clean the heart and liver tissue.

Your heart and lungs are like any other complex, mission critical machines. They need regular care, maintenance, and cleaning or they will fail prematurely.

How often would you schedule routine maintenance for a machine that annually pumps 600,000 gallons of blood by...

[Read More](#)

Price:



RENELIX

Kidney Detoxification

WHAT IT IS:

- Homeopathic medicine for kidney detoxification

WHY YOU NEED IT:

- Important for kidney cleansing, support and those on prescription meds
- Supports patients with abnormal kidney blood and urine testing
- Good for patients with High Blood Pressure
- Core supplement for Foundational Healing
- Targets patients with any of the following kidney symptoms:

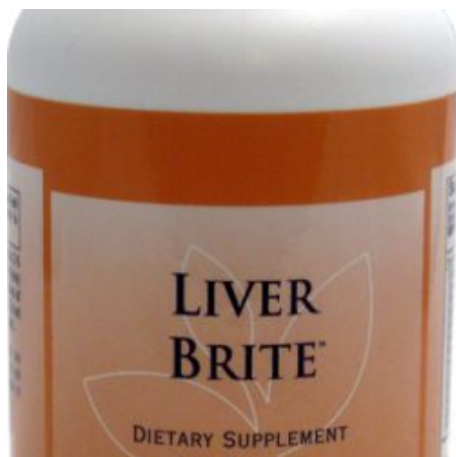
- ☐ Fluid retention, puffiness
- ☐ Arthritis, sore joints
- ☐ Sore muscles
- ☐ Poor energy, fatigue
- ☐ Intense sweet cravings
- ☐ Frequent urination
- ☐ Ringing in the ears
- ☐ Dizziness
- ☐ Meat cravings
- ☐ Infertility
- ☐ Left shoulder pain
- ☐ Ankle pain
- ☐ Gout

HOW IT HELPS:

RENELIX is a German homeopathic medicine that supports kidney detoxification. This remedy uses an ancient manufacturing process first developed by the famous Swiss physician healer,...

[Read More](#)

Price:



LIVER BRITE

LIVER BRITE

WHAT IT IS:

- Herbal support for liver health and detoxification

WHY YOU NEED IT:

- Targets patients looking to deep clean the liver and gallbladder
- Important for patients feeling toxic and bloated
- Supports patients with liver-related symptoms (Take quiz printed below)

HOW IT HELPS:

Your liver is your fourth most important (and neglected) organ, after the brain, heart, and lungs in that order. You can only live a matter of hours without your liver, and those few hours would not be pretty.

Here are just a few critical facts about your liver:

- Weighs one pound
- Cleanses the blood
- Breaks down toxic substances
- Metabolizes every morsel of food you swallow
- Synthesizes vitamins
- Stores and distributes iron and blood sugar
- Balances emotions
- Key component of immune system
- Performs thousands of vital functions every...

[Read More](#)

Price:



KIDNEY CHI

KIDNEY CHI

WHAT IT IS:

- Herbal blend that targets kidney, bladder, and urinary health

WHY YOU NEED IT:

- Targets patients with infections in the kidney, bladder, or prostate
- Great for patients with post-intercourse bladder infections
- Important for patients with kidney stones
- Supports healthy kidney function to clear toxins and waste
- Good for patients with abnormal kidney blood/urine testing and high uric acid

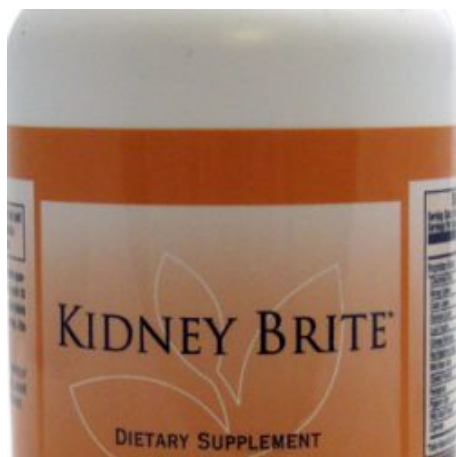
HOW IT HELPS:

Kidney Chi is a blend of herbs that specifically targets the strength and health of the urinary system in both men and women. By assisting the kidney with its normal filtering and detoxification function, Kidney Chi works with your body to improve the health of this very important organ.

Clinical studies have shown that the herbs in Kidney Chi have activity against a number of the bacteria and yeast that cause kidney, bladder and...

[Read More](#)

Price:



KIDNEY BRITE

KIDNEY BRITE

WHAT IT IS:

- Herbal support for kidney health and detoxification

WHY YOU NEED IT:

- Important for patients needing to deep clean the kidney, bladder, and sexual organs
- Targets patients feeling toxic and bloated
- Supports patients with kidney-related symptoms (Take quiz printed below)

HOW IT HELPS:

The Chinese refer to the kidneys as the “Master Organ” because they regulate the usage, levels, pressure, and location of all of the body’s vital fluids. These fluids are used to transport waste from the body’s organs to the kidneys for processing, treatment and then excretion in the urine.

Your body also has to rid itself of gases, acids, oils, resins and all-matters of toxic sludge that we ingest, inhale and absorb. When the kidneys are toxic and overloaded, these waste products cannot be fully flushed from the body, and then must be stored in the...

[Read More](#)

Price:



ITIRES

ITIRES

Lymphatic Detoxification

WHAT IT IS:

- Homeopathic medicine for lymphatic detoxification

WHY YOU NEED IT:

- Supports healthy lymph which is critical for toxin removal
- Important for lymphatic cleansing and support
- Great for healthy lymph drainage
- Completes Triple Core Detox when added to apo-Hepat and Renelix
- Core supplement for Foundational Healing
- Targets patients with any of the following lymphatic symptoms

Fluid retention, puffiness

Bloating

Edema

Poor energy, fatigue

Congestion

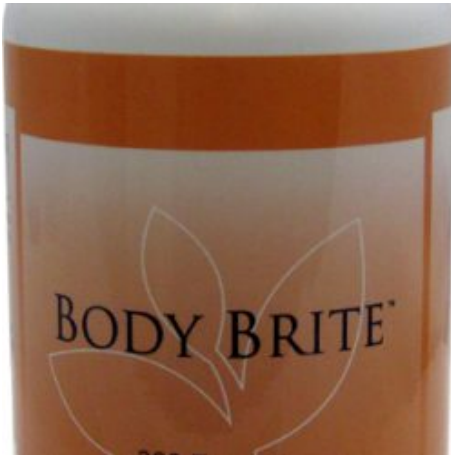
Dizziness

HOW IT HELPS:

ITIRES is a German homeopathic medicine that supports lymphatic detoxification. This remedy uses an ancient manufacturing process first developed by the famous Swiss physician healer, Paracelsus. This process is called "spagyricism" and involves an intricate four-part procedure which includes fermenting the herbs. Through this unique spagyric...

[Read More](#)

Price:



BODY BRITE

BODY BRITE

WHAT IT IS:

- Herbal support for total body health and detoxification

WHY YOU NEED IT:

- Great for patients looking detox all organs and tissues
- Important for patients feeling toxic and bloated
- Supports patients with toxin-related symptoms (Take quiz printed below)
- Can be used with any detox regimen to provide total body support

HOW IT HELPS:

Body Brite is a carefully formulated herbal remedy to assist all body organs and channels in detoxification. As such, this remedy forms the foundation of any detox program.

To detox successfully and uneventfully, you must be able to clear all of the toxins that you pull from the cellular "trash cans" that store the toxins in your body. Body Brite is an essential part of your core detox program because it helps each component of your detox pathways: skin, liver, kidney, lung, blood and lymph.

Body Brite should...

[Read More](#)

Price:



APO-HEPAT

apo-HEPAT
Liver Detoxification

WHAT IT IS:

- Homeopathic medicine for liver detoxification

WHY YOU NEED IT:

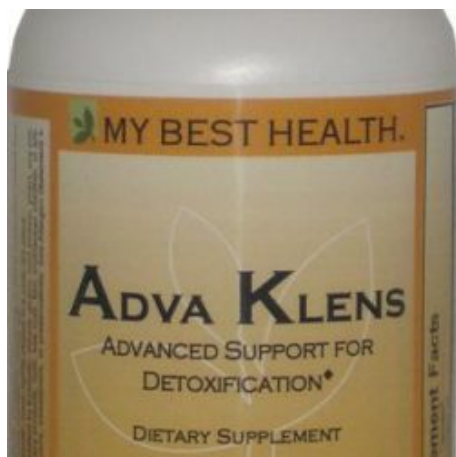
- Important for liver cleansing, support and those on prescription meds
- Core supplement for Foundational Healing
- Supports patients with abnormal liver blood testing
- Targets patients with any of the following liver symptoms
 - > Bad mood or depression
 - > Irritated, red eyes
 - > Poor memory and focus
 - > Poor energy
 - > Headache
 - > Poor sleep
 - > Acne
 - > Eczema
 - > Dry, itchy skin
 - > Fibromyalgia
 - > Poor digestion
 - > Burning mouth, tongue
 - > Sinus congestion
 - > Addictive personality

HOW IT HELPS:

apo-HEPAT is a German homeopathic medicine that supports liver detoxification. This remedy uses an ancient manufacturing process first developed by the famous Swiss physician healer, Paracelsus. This process is called "spagyrisms" and involves an...

[Read More](#)

Price:



ADVA KLENS

ADVA-KLENS

Companion Supplement for Nutra-Klens Program

WHAT IT IS:

- Adva-Klens is a natural blend of vitamins and extracts to support liver health and detoxification.

WHY YOU NEED IT:

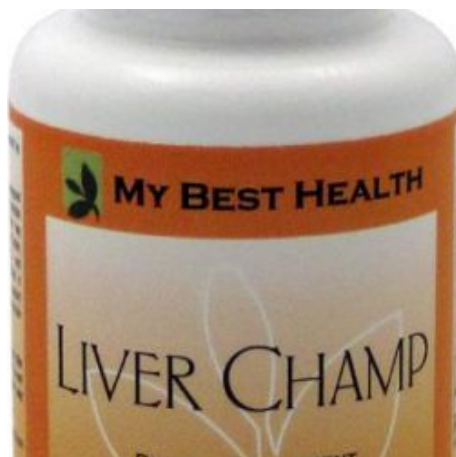
- Targets patients wanting to maximize their detoxification protocol with Nutra-Klens
- Supports patients wanting to clear toxins
- Great for patients needing to rejuvenate ailing liver function

Usual Dosage: Take one capsule of Adva-Klens twice daily with the Nutra-Klens shake. If you are feeling particularly toxic, increase this dose to two capsules twice daily until you are feeling better.

*These statements have not been evaluated by the Food and Drug Administration. This product is not intended to diagnose, treat, cure, or prevent any disease.

[Read More](#)

Price:



LIVER CHAMP

Liver Champ

WHAT IT IS:

- Natural supplement to support liver function

WHY YOU NEED IT:

- Important for patients wanting to optimize liver metabolization of hormones, heavy metals, and toxins
- Replenishes vitamins lost when taking birth control pills
- Supports healthy homocysteine levels

Between what we inhale, swallow, and absorb through our skin, our livers are working overtime helping to clean our “dirty” blood. Liver detoxification uses a tremendous amount of vitamins and nutrients.

Over time, these nutrients are depleted, and this weakens the liver’s ability to clean and protect us. When well stocked with the nutrients in Liver Champ, the liver can perform its essential features, including reducing the chances of disease such as cancer.

Homocysteine is a molecule found in the blood that, when elevated, increases the risk for Age-Related Macular...

[Read More](#)

Price:



BLESSED THISTLE

BLESSED THISTLE Helps Liver Detoxify Blood
WHAT IT IS: • Herbal therapy for liver health and support
WHY YOU NEED IT: • Important for patients needing assistance with liver protection and detoxification • Supports patients with high cholesterol, elevated insulin, high blood sugar • Great for patients with prostate health concerns • All-natural, well tolerated
HOW IT HELPS: Blessed thistle is the common name for the herb *Silybum marianum*, long appreciated through the centuries by medicine men for its tonic health benefits. And now modern herbalists know why. Blessed Thistle helps the liver detoxify the blood and regenerate itself when injured by the foods, drugs, and chemicals we ingest or inhale. It also has been shown to support patients wanting lower blood cholesterol, blood sugar, and insulin levels without the typical side effects of prescription medications. Blessed Thistle can be used by...

[Read More](#)

Price: